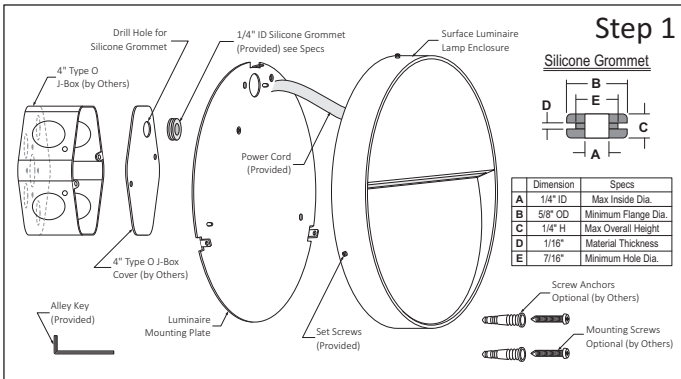


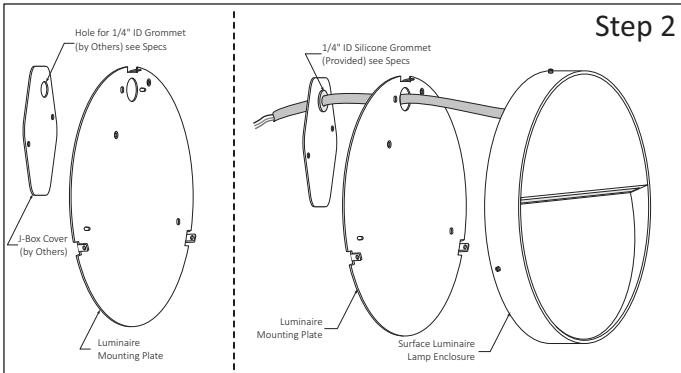
PREPARING THE LUMINAIRE

SURFACE MOUNT LUMINAIRE SLS1000 / 1400 / 1500

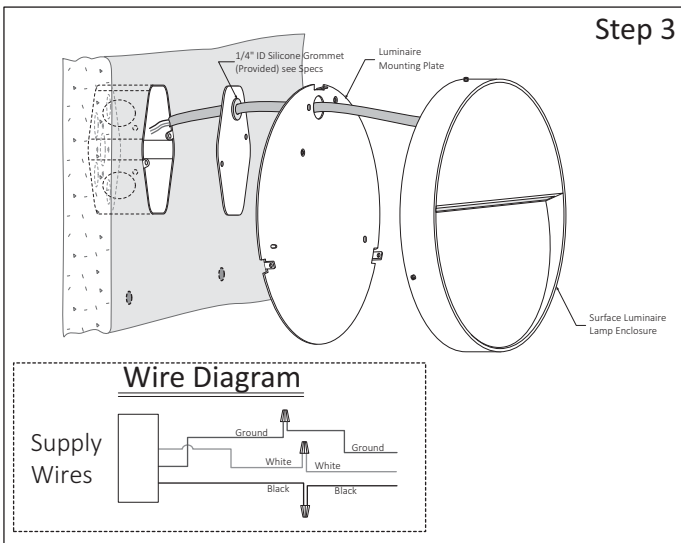
SAVE THIS INSTRUCTIONS



Step 1 - Get Luminaire and proper Parts for Installation:
 a.- Remove Mounting Plate and prepare all parts as needed for water-tight Installation.

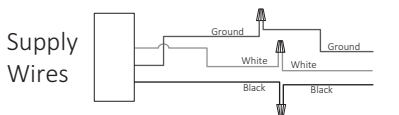


Step 2 - Drill a Hole for Silicone Grommet on J-Box Cover:
 a.- Align J-Box Cover mounting holes with Luminaire Plate holes and trace the hole location on J-Box Cover (by others) and drill a hole, see Specifications of Grommet.
 b.- Insert Grommet (provided) into the J-Box hole, make sure it's tight.
 c.- Run Fixture Power Cord through Luminaire Plate and the Grommet.



Step 3 - Make Wiring Connections:
 a.- Place Luminaire close to Mounting surface and make electrical connection, see Wire Diagram.

Wire Diagram

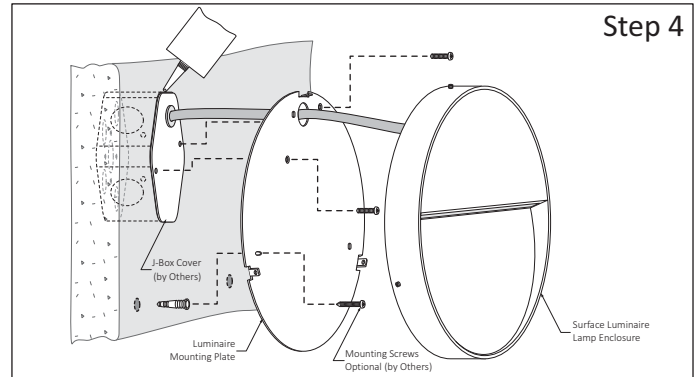


READ AND UNDERSTAND ALL INSTRUCTIONS BEFORE INSTALLATION. IF YOU ARE NOT FAMILIAR WITH THE NATIONAL ELECTRICAL CODE (NEC), CONTACT A QUALIFIED ELECTRICIAN TO INSTALL THIS LUMINAIRE.

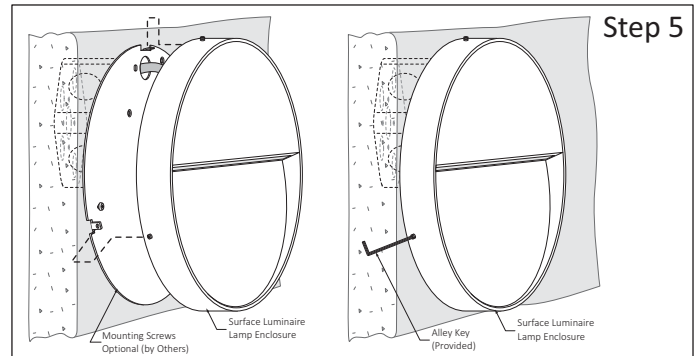
WARNING.- Before installing this luminaire or doing any maintenance, turn off the power supply at the circuit breaker or fuse box. Turning the power off using the light switch is not sufficient to prevent electrical shock.

NOTE:

To re-lamp, replacement parts or additional information, contact or visit manufacturer at www.lumux.net



Step 4 - Install Junction Box Cover:
 a.- Place Weatherproof Cover (by Others) onto the Junction Box. If not used a Weatherproof Cover, installer must seal the Cover all around the J-Box.
 b.- Place Mounting Plate and align holes to J-Box Cover and fasten using the Screws (provided) J-Box Manufacturer. Installer may use additional mounting screws and anchors (by others).



Step 5 - Install Surface Mount Luminaire:
 a.- Push the Power Cord into the J-Box and align Mounting Plate Taps to Luminaire grooves "set Screws" and fasten the Set Screws using the Alley Key (provided).

